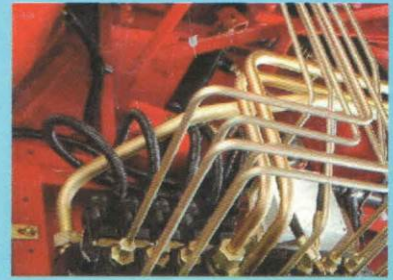


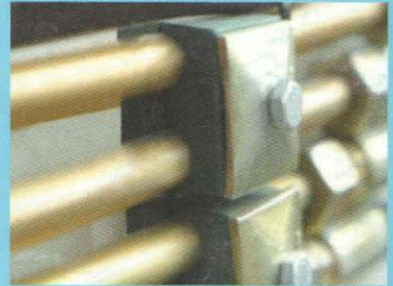


WELD NIPPLE FITTINGS

ISO 8434-4



Connections for all your hydraulic tubing



Support and solutions for your special



Success in new markets and applications



Weld nipple fitting consists of mainly 3 parts (1) body, (2) nipple (With 'O' ring) and (3) nut for M.M.O.D. tube fittings. Body and nut conforms to ISO 8434-1/IS 8805 in dimension and pressure rating. Nipples conforms to ISO 8434-4 specify different pressure rating. For N.B.pipe fittings refer to HYD-AIR standards.

Nipple cone fits perfectly in the body and O-ring which seals, is approximately 0.4-0.6 MM. over the nipple surface to ensure perfect sealing when assemble. With the increase in pressure the O-ring is pressed giving more effective sealing. Steel nipple is normally phosphated and body and nut zinc plated. Other material specially stainless steel of different grade can be supplied on request. Normally steel in accordance to ISO 8434-4/IS 8805 is used.

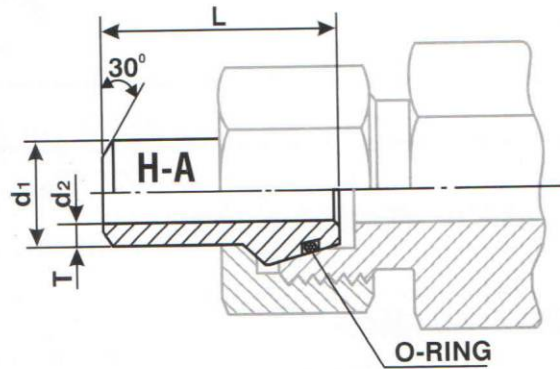
Assembly Procedure

- 1) Cut the tube 90 deg. and prepare the joint as per DIN 2559.
- 2) Mount the Nut on welding nipple.
- 3) Weld the nipple with the tube as per normal welding procedure.
- 4) Place O-ring on the cone, ensure the correct size of O-rings is Used, O-ring must have free space for side movement.
- 5) Tighten by hand and further 1/4 - 1/2 turn to give perfect joint.
- 6) Ensure the tube is supported properly, recommend use HYD-AIR pipe clamps.

Note: All part numbers in this catalogue refers to fully steel fittings with nitrile seals. For SS 304 add suffix "SS", for SS316 add suffix "SS316" and for VITON seals add suffix "VI" to part number given. Example: WNO 6X1.5-L/S-SS316-VI.

The dimensions given in this catalogue are subject to change without notice.

CONTENT	PAGE NO.
WELDING NIPPLE WITH O-RING (FOR METRIC O.D. TUBES)	01
REDUCING WELDING NIPPLE WITH O-RING	02
WELDING NIPPLE WITH O-RING (FOR NOMINAL BORE PIPES)	03
BLANKING PLUG	04
PARALLEL MALE STUD COUPLING WITH WELDING NIPPLE	05
PARALLEL MALE STUD COUPLING WITH ELASTOMERIC SEAL & WELDING NIPPLE	06
PARALLEL MALE STUD COUPLING WITH O-RING AND WELDING NIPPLE	07
ADJUSTABLE SWIVEL ELBOW CONNECTOR WITH O-RING AND WELDING NIPPLE	08
HIGH PRESSURE SWIVEL BANJO CONNECTOR WITH WELDING NIPPLE	09
STRAIGHT WELDING BOSSES WITH WELDING NIPPLE	10
STRAIGHT COUPLING WITH WELDING NIPPLE	11
WELDING CONNECTOR WITH WELDING NIPPLE	12
STRAIGHT BULKHEAD UNION WITH WELDING NIPPLE	13
BULKHEAD ELBOW UNION WITH WELDING NIPPLE	14
EQUAL ELBOW UNION WITH WELDING NIPPLE	15
EQUAL TEE UNION WITH WELDING NIPPLE	16
OTHER PRODUCTS	17



FOR METRIC SIZE OUT SIDE DIAMETER TUBING

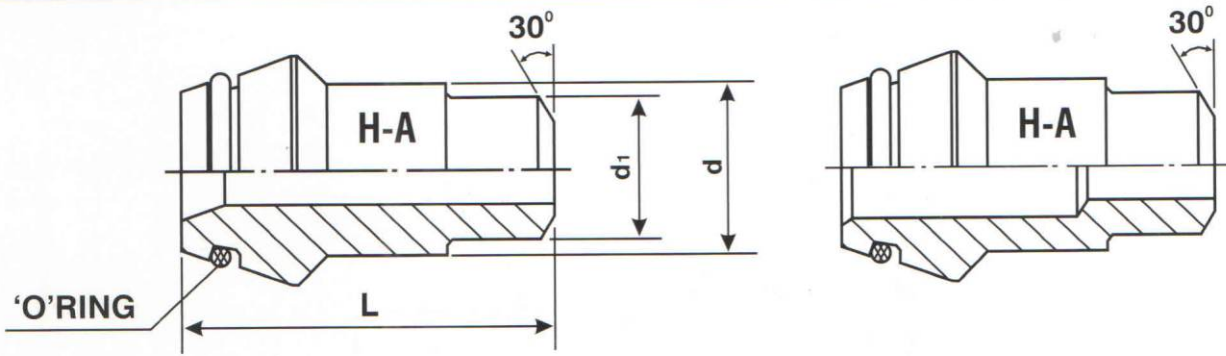
WORKING PRESSURE (BAR)	d ₁ x T	d ₂	L	O-RING	PART NUMBER
400	6 x 1.5	3.0	28.5	4.0 x 1.5	WNO 6 x 1.5-L/S
315	8 x 1.5	5.0	29.0	6.0 x 1.5	WNO 8 x 1.5-L/S
400	8 x 2.0	4.0	29.0		WNO 8 x 2-L/S
160	10 x 1.0	8.0	32.0	7.5 x 1.5	WNO 10 x 1-L/S
250	10 x 1.5	7.0	32.0		WNO 10 x 1.5-L/S
315	10 x 2.0	6.0	32.0		WNO 10 x 2-L/S
400	10 x 2.5	5.0	32.0		WNO 10 x 2.5-L/S
160	12 x 1.5	9.0	32.5	9.0 x 1.5	WNO 12 x 1.5-L/S
250	12 x 2.0	8.0	32.5		WNO 12 x 2-L/S
315	12 x 2.5	7.0	32.5		WNO 12 x 2.5-L/S
400	12 x 3.0	6.0	32.5		WNO 12 x 3-L/S
250	14 x 2.0	10.0	38.5	10.0 x 2.0	WNO 14 x 2-S
250	15 x 2.0	11.0	35.0	12.0 x 2.0	WNO 15 x 2-L
160	16 x 1.5	13.0	39.0	12.0 x 2.0	WNO 16 x 1.5-S
250	16 x 2.0	12.0	39.0		WNO 16 x 2-S
315	16 x 2.5	11.0	39.0		WNO 16 x 2.5-S
400	16 x 3.0	10.0	39.0		WNO 16 x 3-S
160	18 x 2.0	14.0	35.0	15.0 x 2.0	WNO 18 x 2-L
160	20 x 2.0	16.0	43.0	16.3 x 2.4	WNO 20 x 2-S
250	20 x 2.5	15.0	43.0		WNO 20 x 2.5-S
315	20 x 3.0	14.0	43.0		WNO 20 x 3-S
400	20 x 4.0	12.0	43.0		WNO 20 x 4-S
160	22 x 2.0	18.0	35.0	20.0 x 2.0	WNO 22 x 2-L
160	25 x 2.5	20.0	50.0	20.3 x 2.4	WNO 25 x 2.5-S
250	25 x 3.0	19.0	50.0		WNO 25 x 3-S
315	25 x 4.0	17.0	50.0		WNO 25 x 4-S
400	25 x 5.0	15.0	50.0		WNO 25 x 5-S
100	28 x 2.5	23.0	41.0	26.0 x 2.0	WNO 28 x 2.5-L
160	30 x 3.0	24.0	52.0	25.3 x 2.4	WNO 30 x 3-S
250	30 x 4.0	22.0	52.0		WNO 30 x 4-S
315	30 x 5.0	20.0	52.0		WNO 30 x 5-S
400	30 x 6.0	18.0	52.0		WNO 30 x 6-S
100	35 x 3.0	29.0	48.0	32.0 x 2.5	WNO 35 x 3-L
160	38 x 4.0	30.0	56.5	33.3 x 2.4	WNO 38 x 4-S
250	38 x 5.0	28.0	56.5		WNO 38 x 5-S
315	38 x 6.0	26.0	56.5		WNO 38 x 6-S
400	38 x 8.0	22.0	56.5		WNO 38 x 8-S
100	42 x 3.0	36.0	50.5	38.0 x 2.5	WNO 42 x 3-L
160	50 x 5.0	40.0	60.0	46.0 x 3.0	WNO 50 x 5-S
250	50 x 6.0	38.0	60.0		WNO 50 x 6-S
315	50 x 8.0	34.0	60.0		WNO 50 x 8-S
400	50 x 10.0	30.0	60.0		WNO 50 x 10-S

REF : AVIT = AK, SN 807, ISO 8434-4

NOTE : MAXIMUM WORKING PRESSURE OF THE FITTING ASSY. WITH WELDING NIPPLE DEPEND UPON WORKING PRESSURE OF THE FITTING AND WELDING NIPPLE, WHICHEVER IS LOWEST.

DIMENSIONS SUBJECT TO CHANGE.

REDUCING WELDING NIPPLE WITH O-RING

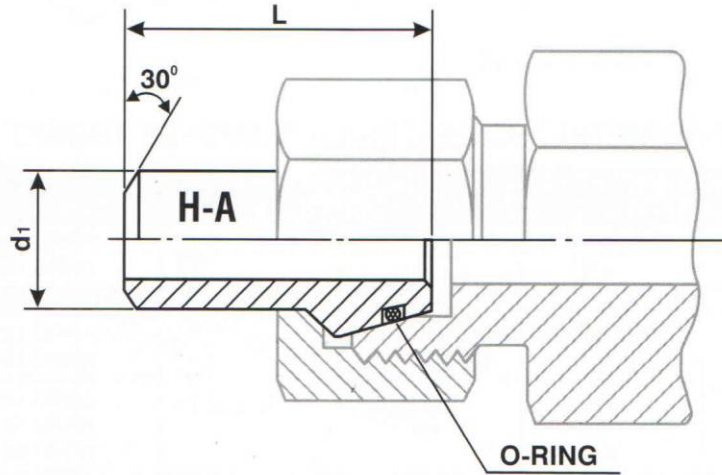


FOR METRIC SIZE OUT SIDE DIAMETER TUBING

d	d ₁	L	O-RING	PART NUMBER d/d ₁ x T
10	6 8	32	7.5 x 1.5	WNRO 10/6 x ---S WNRO 10/8 x ---S
12	6 8 10	32.5	9.0 x 1.5	WNRO 12/6 x ---S WNRO 12/8 x ---S WNRO 12/10 x ---S
14	6 8 10	38.5	10.0 x 2.0	WNRO 14/6 x ---S WNRO 14/8 x ---S WNRO 14/10 x ---S
16	6 8 10 12 14	39	12.0 x 2.0	WNRO 16/6 x ---S WNRO 16/8 x ---S WNRO 16/10 x ---S WNRO 16/12 x ---S WNRO 16/14 x ---S
20	6 8 10 12 14 16	43	16.3 x 2.4	WNRO 20/6 x ---S WNRO 20/8 x ---S WNRO 20/10 x ---S WNRO 20/12 x ---S WNRO 20/14 x ---S WNRO 20/16 x ---S
25	6 8 10 12 14 16 20	50	20.3 x 2.4	WNRO 25/6 x ---S WNRO 25/8 x ---S WNRO 25/10 x ---S WNRO 25/12 x ---S WNRO 25/14 x ---S WNRO 25/16 x ---S WNRO 25/20 x ---S
30	6 8 10 12 14 16 20 25	52	25.3 x 2.4	WNRO 30/6 x ---S WNRO 30/8 x ---S WNRO 30/10 x ---S WNRO 30/12 x ---S WNRO 30/14 x ---S WNRO 30/16 x ---S WNRO 30/20 x ---S WNRO 30/25 x ---S
38	6 8 10 12 14 16 20 25 30	56.5	33.3 x 2.4	WNRO 38/6 x ---S WNRO 38/8 x ---S WNRO 38/10 x ---S WNRO 38/12 x ---S WNRO 38/14 x ---S WNRO 38/16 x ---S WNRO 38/20 x ---S WNRO 38/25 x ---S WNRO 38/30 x ---S
50	10 12 14 16 20 25 30 38	60	46.0 x 3.0	WNRO 50/10 x ---S WNRO 50/12 x ---S WNRO 50/14 x ---S WNRO 50/16 x ---S WNRO 50/20 x ---S WNRO 50/25 x ---S WNRO 50/30 x ---S WNRO 50/38 x ---S

T = TUBE WALL THICKNESS, PLEASE SPECIFY.

DIMENSIONS SUBJECT TO CHANGE.



FOR INCH SIZE NOMINAL BORE PIPING

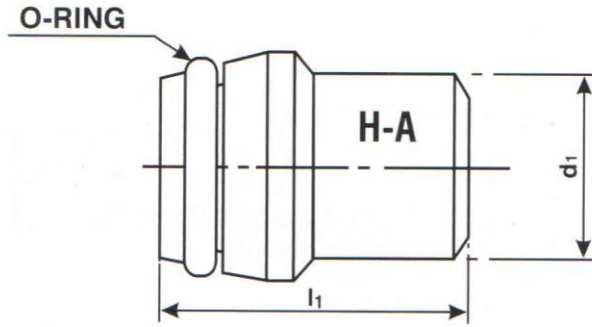
NOMINAL WORKING PRESSURE OF FITTING (P.S.I.)	d ₁	L	O-RING	PART NUMBER -SCH.
6000	13.7 (1/4 NB)	40	10.0 x 2.0	4 WNONB----
6000	17.1 (3/8 NB)	42	13.3 x 2.0	6 WNONB----
6000	21.3 (1/2 NB)	42	18.2 x 2.4	8 WNONB----
6000	26.7 (3/4 NB)	53	22.3 x 2.4	12 WNONB----
3000	33.4 (1 NB)	60	29.4 x 2.4	16 WNONB----
3000	42.2 (1 1/4 NB)	70	38.0 x 2.4	20 WNONB----
2000	48.3 (1 1/2 NB)	79	43.8 x 2.4	24 WNONB----

SCH. = PIPE SCHEDULE, PLEASE SPECIFY.

NOTE: MAXIMUM WORKING PRESSURE OF THE FITTING ASSEMBLY WITH WELDING NIPPLE DEPEND UPON WORKING PRESSURE OF THE FITTING AND N.B. SCHEDULE PIPE, WHICHEVER IS LOWEST.

DIMENSIONS SUBJECT TO CHANGE.

FOR BLANKING
OF COUPLINGS



FOR METRIC SIZE OUT SIDE DIAMETER TUBE FITTING

d ₁	l ₁	O-RING	PART NUMBER
6	18.5	4.0 x 1.5	PWNO 6-L/S
8	18.5	6.0 x 1.5	PWNO 8-L/S
10	20	7.5 x 1.5	PWNO 10-L/S
12	20.5	9.0 x 1.5	PWNO 12-L/S
14	22.5	10.0 x 2.0	PWNO 14-S
15	20.5	12.0 x 2.0	PWNO 15-L
16	23.5	12.0 x 2.0	PWNO 16-S
18	22.5	15.0 x 2.0	PWNO 18-L
20	28.5	16.3 x 2.4	PWNO 20-S
22	25	20.0 x 2.0	PWNO 22-L
25	29	20.3 x 2.4	PWNO 25-S
28	25.5	26.0 x 2.0	PWNO 28-L
30	30.5	25.3 x 2.4	PWNO 30-S
35	30	32.0 x 2.5	PWNO 35-L
38	33	33.3 x 2.4	PWNO 38-S
42	30	38.0 x 2.5	PWNO 42-L
50	30	46.0 x 3.0	PWNO 50-S

FOR INCH SIZE NOMINAL BORE PIPE FITTING

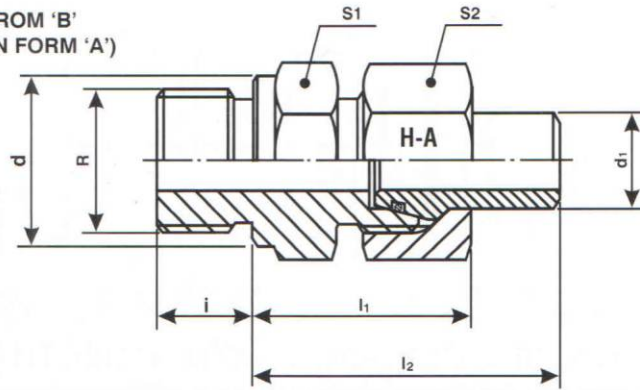
d ₁	l ₁	O-RING	PART NUMBER
13.7(1/4 NB)	20	10.0 x 2.0	4 PWNONB
17.1(3/8 NB)	21	13.3 x 2.0	6 PWNONB
21.3(1/2 NB)	22	18.2 x 2.4	8 PWNONB
26.7(3/4 NB)	25	22.3 x 2.4	12 PWNONB
33.4 (1NB)	28	29.4 x 2.4	16 PWNONB
42.2(1 1/4 NB)	30	38.0 x 2.4	20 PWNONB
48.3(1 1/2 NB)	33	43.8 x 2.4	24 PWNONB

DIMENSIONS SUBJECT TO CHANGE.

PARALLEL MALE STUD COUPLING WITH WELDING NIPPLE



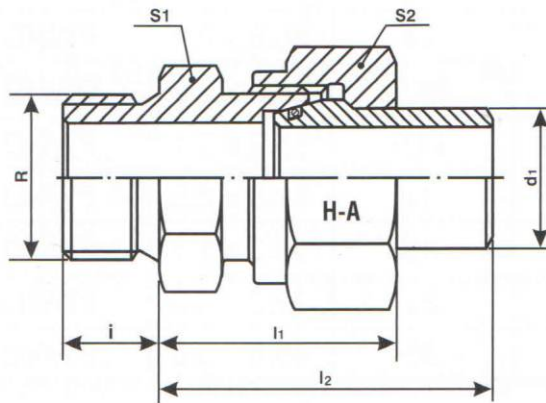
STUD THREAD : BSP
STUD FACE FROM 'B'
(AVAILABLE IN FORM 'A')



FOR METRIC SIZE OUTSIDE DIAMETER TUBING

d ₁	BSP THREAD R	d	i	<u>l₁</u>	<u>l₂</u>	S1	S2	PART NUMBER d ₁ x --- S/R 1/4
10	1/4	18	12	31.5	48.0	19	22	WCP 10 x --- S/R 1/4
10	3/8	22	12	32.0	48.5	22	22	WCP 10 x --- SR
12	3/8	22	12	34.0	50.5	22	24	WCP 12 x --- SR
16	1/2	26	14	37.5	59.0	27	30	WCP 16 x --- SR
20	3/4	32	16	43.5	65.5	32	36	WCP 20 x --- SR
25	1	39	18	48.5	76.5	41	46	WCP 25 x --- SR
30	1 1/4	49	20	51.5	81.0	50	50	WCP 30 x --- SR
38	1 1/2	55	22	58.0	90.5	55	60	WCP 38 x --- SR

STUD THREAD : BSP



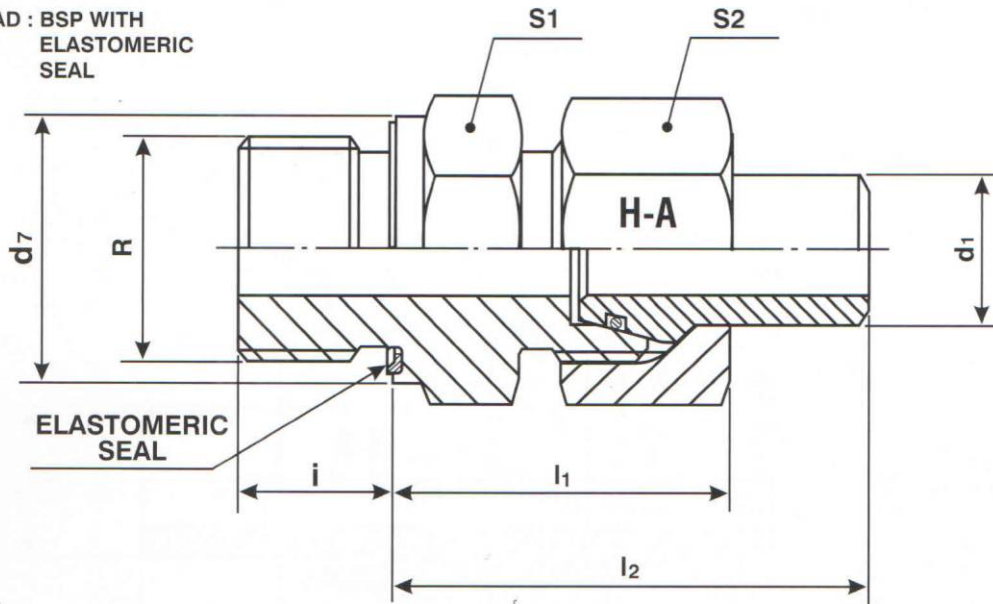
FOR INCH SIZE NOMINAL BORE PIPING

d ₁	BSP THREAD R	i	<u>l₁</u>	<u>l₂</u>	S1	S2	PART NUMBER -SCH.
13.7 (1/4 NB)	1/4	11.0	28.5	54.5	24	27	4WCPNBR-----
17.1 (3/8 NB)	3/8	12.7	31.0	57.5	27	32	6WCPNBR-----
21.3 (1/2 NB)	1/2	16.0	34.0	57.0	30	36	8WCPNBR-----
26.7 (3/4 NB)	3/4	19.0	39.5	74.0	36	41	12WCPNBR-----
33.4 (1 NB)	1	22.0	44.5	83.0	46	52	16WCPNBR-----
42.2 (1 1/4 NB)	1 1/4	25.0	49.0	99.0	55	60	20WCPNBR-----
48.3 (1 1/2 NB)	1 1/2	25.4	53.5	113	65	70	24WCPNBR-----

T = TUBE WALL THICKNESS, PLEASE SPECIFY.
SCH. = PIPE SCHEDULE, PLEASE SPECIFY

DIMENSIONS SUBJECT TO CHANGE.

STUD THREAD : BSP WITH ELASTOMERIC SEAL



FOR METRIC SIZE OUTSIDE DIAMETER TUBING

d ₁	BSP THREAD R	d ₇	i	<u>l₁</u>	<u>l₂</u>	S1	S2	PART NUMBER d ₁ x T
10	1/4	19	12	31.5	48.0	19	22	WCP 10 x---S/R ¹ / ₄ -NR
10	3/8	22	12	32.0	48.5	22	22	WCP 10 x---SR-NR
12	3/8	22	12	34.0	50.5	22	24	WCP 12 x---SR-NR
16	1/2	27	14	37.5	59.0	27	30	WCP 16 x---SR-NR
20	3/4	32	16	43.5	65.5	32	36	WCP 20 x---SR-NR
25	1	40	18	48.5	76.5	41	46	WCP 25 x---SR-NR
30	1 1/4	50	20	51.5	81.0	50	50	WCP 30 x---SR-NR
38	1 1/2	55	22	58.0	90.5	55	60	WCP 38 x---SR-NR
50	1 3/4	60	24	72.0	101.0	70	80	WCP 50 x---S/R 1 3/4-NR
50	2	70	24	72.0	101.0	70	80	WCP 50 x---SR-NR

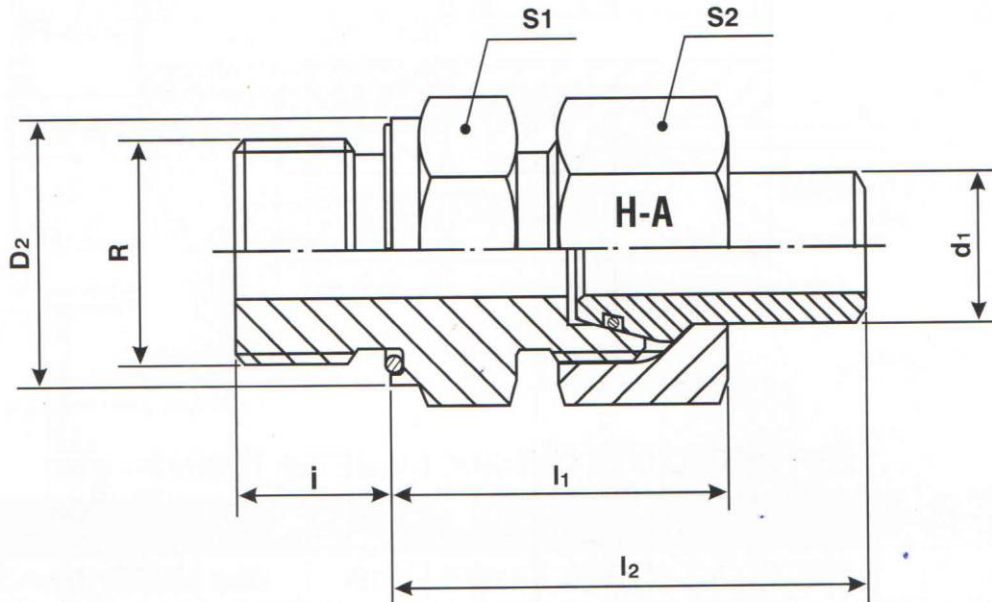
FOR INCH SIZE NOMINAL BORE PIPING

d ₁	BSP THREAD R	d ₇	i	<u>l₁</u>	<u>l₂</u>	S1	S2	PART NUMBER -SCH.
13.7 (1/4 NB)	1/4	19	12	32.0	58.0	24	27	4 WCPNBR-NR-----
17.1 (3/8 NB)	3/8	22	12	34.5	61.0	27	32	6 WCPNBR-NR-----
21.3 (1/2 NB)	1/2	27	14	37.0	60.0	30	36	8 WCPNBR-NR-----
26.7 (3/4 NB)	3/4	32	16	42.0	76.5	36	41	12 WCPNBR-NR-----
33.4 (1 NB)	1	40	18	45.5	84.0	46	52	16 WCPNBR-NR-----
42.2 (1 1/4 NB)	1 1/4	50	20	53.0	103.0	55	60	20 WCPNBR-NR-----
48.3 (1 1/2 NB)	1 1/2	55	22	58.0	117.0	65	70	24 WCPNBR-NR-----

T = TUBE WALL THICKNESS, PLEASE SPECIFY.
SCH. = PIPE SCHEDULE, PLEASE SPECIFY

DIMENSIONS SUBJECT TO CHANGE.

STUD THREAD : BSP WITH
O-RING SEAL

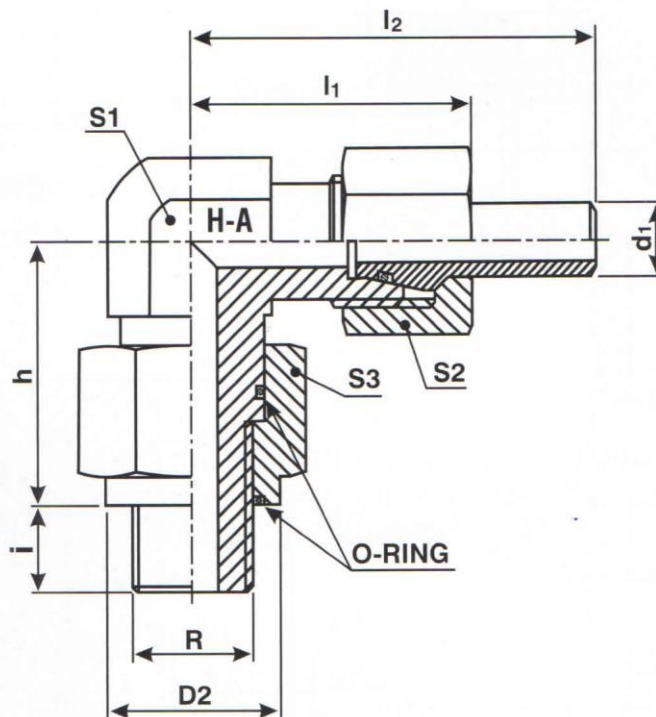


FOR METRIC SIZE OUTSIDE DIAMETER TUBING

d ₁	BSP THREAD R	D ₂	i	l ₁	l ₂	S1	S2	O-RING	PART NUMBER d ₁ x T
10	1/4	22	12	33.5	50.0	22	22	14.0 x 2.0	WCP 10 x---S/R ¹ / ₄ -OR
10	3/8	24	12	34.0	50.5	24	22	17.0 x 1.5	WCP 10 x---SR-OR
12	3/8	24	12	34.0	50.5	24	24	17.0 x 1.5	WCP 12 x---SR-OR
16	1/2	30	14	37.5	59.0	30	30	22.0 x 2.0	WCP 16 x---SR-OR
20	3/4	40	16	45.5	67.5	41	36	29.8 x 2.6	WCP 20 x---SR-OR
25	1	46	18	48.5	76.5	46	46	34.5 x 2.6	WCP 25 x---SR-OR
30	1 1/4	54	20	54.5	84.0	55	50	43.0 x 3.0	WCP 30 x---SR-OR
38	1 1/2	60	22	61.0	93.5	60	60	49.0 x 3.0	WCP 38 x---SR-R
50	1 3/4	68	24	72.0	101.0	70	80	55.0 x 3.0	WCP 50 x---S/R ³ / ₄ -OR
50	2	75	24	72.0	101.0	75	80	61.0 x 3.5	WCP 50 x---SR-OR

T = TUBE WALL THICKNESS, PLEASE SPECIFY.

DIMENSIONS SUBJECT TO CHANGE.

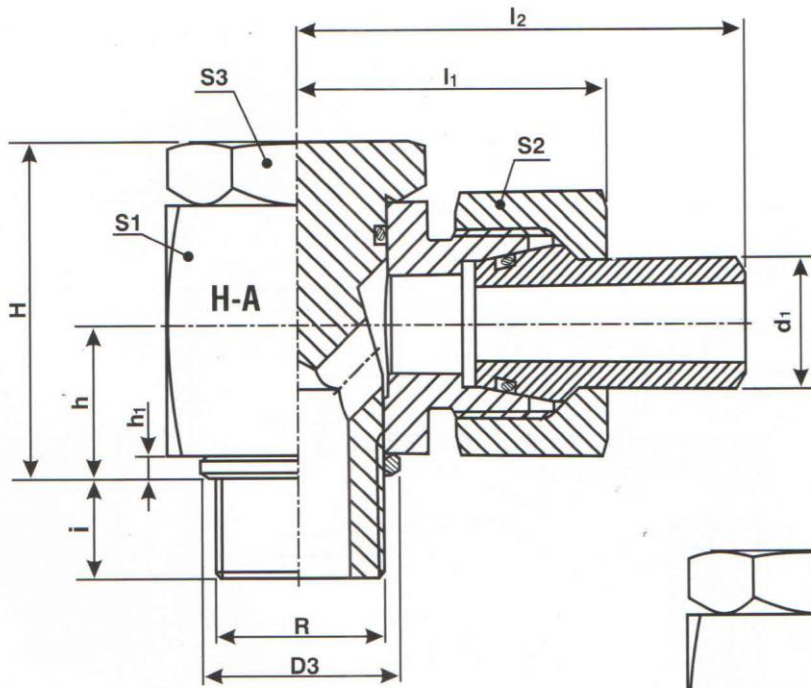


FOR METRIC SIZE OUTSIDE DIAMETER TUBING

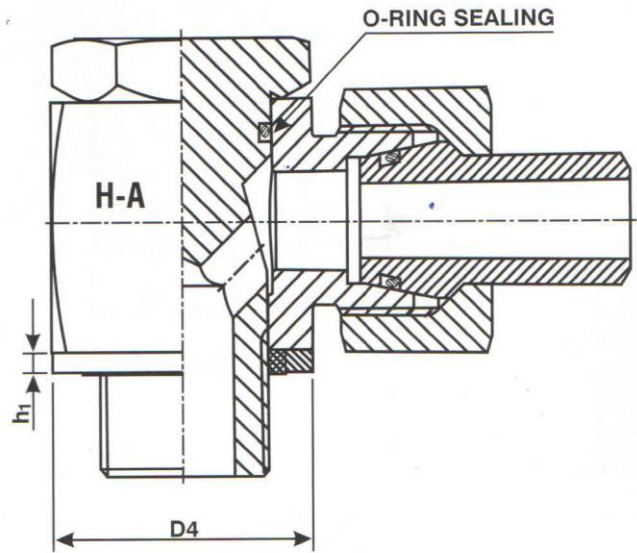
d ₁	BSP THREAD R	D ₂	h	i	\underline{l}_1	\underline{l}_2	S1	S2	S3	O-RING	PART NUMBER d ₁ x T
10	1/4	22	36.0	12	38.5	55.0	19	22	24	14.0 x 2.0	WSE 10 x---S/R ¹ / ₄ -OR
10	3/8	24	36.0	12	38.5	55.0	22	22	27	17.0 x 1.5	WSE 10 x---SR-OR
12	3/8	24	36.5	12	38.5	55.0	22	24	27	17.0 x 1.5	WSE 12 x---SR-OR
16	1/2	30	42.5	14	40.5	62.0	27	30	32	22.0 x 2.0	WSE 16 x---SR-OR
20	3/4	40	51.0	16	51.5	73.5	32	36	41	26.6 x 2.6	WSE 20 x---SR-OR
25	1	46	63.5	18	58.5	86.5	41	46	50	34.5 x 2.6	WSE 25 x---SR-OR
30	1 1/4	54	67.5	20	62.5	92.0	50	50	60	43.0 x 3.0	WSE 30 x---SR-OR
38	1 1/2	60	74.5	22	74.0	106.5	55	60	65	48.0 x 3.0	WSE 38 x---SR-OR
50	2	75	90.0	24	95.5	124.5	70	80	80	60.0 x 3.5	WSE 50 x---SR-OR

T = TUBE WALL THICKNESS, PLEASE SPECIFY.

DIMENSIONS SUBJECT TO CHANGE.



WITH SEALING RING



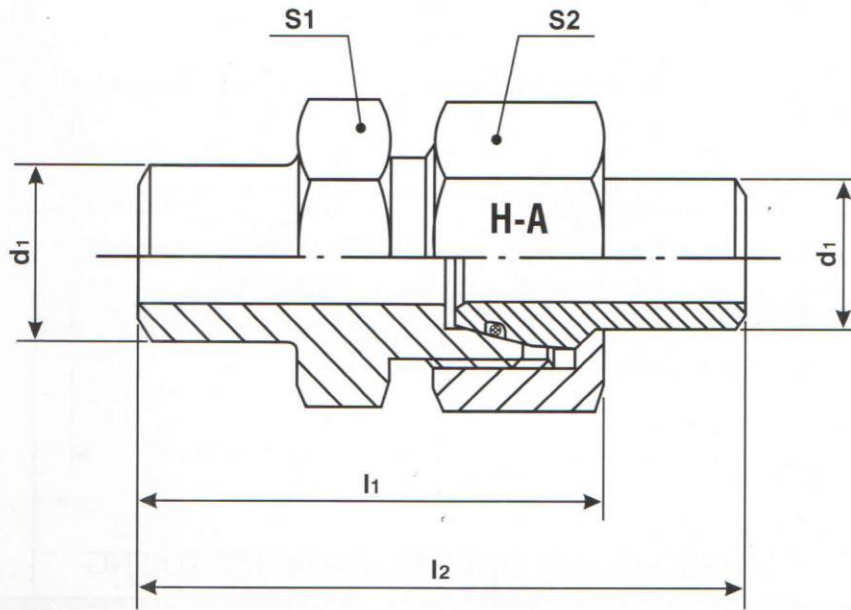
WITH SOFT SEAL

FOR METRIC SIZE OUTSIDE DIAMETER TUBING

d ₁	BSP R	<u>l₁</u>	<u>l₂</u>	i	H	h	D ₃	D ₄	h ₁	S1	S2	S3	PART NUMBER (TYPE WITH SEALING RING) d ₁ x T	PART NUMBER (TYPE WITH SOFT SEAL) d ₁ x T
10	1/4	33.0	49.5	12	35	16.5	18	22	3.0	22	22	19	WBEH 10 x--S/R ¹ / ₄	WBEH 10 x--S/R ¹ / ₄ -KD
10	3/8	35.5	52.0	12	36	16.5	22	27	3.0	27	22	24	WBEH 10 x--SR	WBEH 10 x--SR-KD
12	3/8	35.5	52.0	12	36	16.5	22	27	3.0	27	24	24	WBEH 12 x--SR	WBEH 12 x--SR-KD
16	1/2	41.0	62.5	14	45	21.5	26	32	4.5	32	30	30	WBEH 16 x--SR	WBEH 16 x--SR-KD
20	3/4	49.5	71.5	16	53	24.0	32	41	3.5	41	36	36	WBEH 20 x--SR	WBEH 20 x--SR-KD
25	1	57.0	85.0	18	66	30.5	39	46	3.5	50	46	46	WBEH 25 x--SR	WBEH 25 x--SR-KD
30	1 1/4	65.0	94.5	20	76	35.5	49	57	3.5	60	50	55	WBEH 30 x--SR	WBEH 30 x--SR-KD
38	1 1/2	73.5	106.0	22	87	40.5	55	64	3.5	70	60	60	WBEH 38 x--SR	WBEH 38 x--SR-KD

T = TUBE WALL THICKNESS, PLEASE SPECIFY.

DIMENSIONS SUBJECT TO CHANGE.

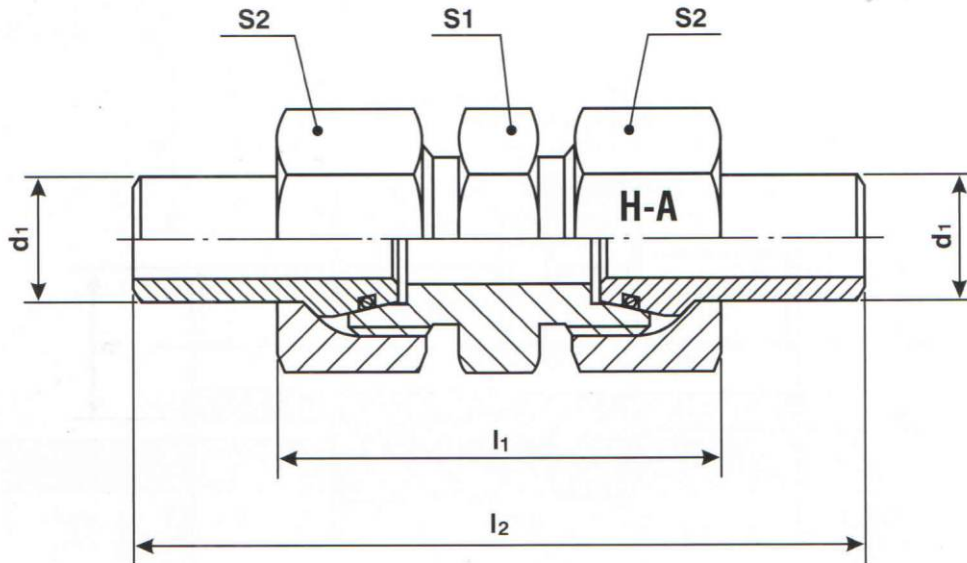


FOR METRIC SIZE OUT SIDE DIAMETER TUBING

d ₁	<u>l₁</u>	<u>l₂</u>	S1	S2	PART NUMBER d ₁ x T
10	41.5	58.0	19	22	WCWK 10 x---S
12	46.5	63.0	22	24	WCWK 12 x---S
15	40.0	58.5	22	27	WCWK 15 x---L
16	52.0	73.5	27	30	WCWK 16 x---S
18	42.0	61.0	27	32	WCWK 18 x---L
20	59.5	81.5	32	36	WCWK 20 x---S
22	46.0	65.0	32	36	WCWK 22 x---L
25	65.0	93.0	41	46	WCWK 25 x---S
28	49.5	72.5	41	41	WCWK 28 x---L
30	72.5	102.0	46	50	WCWK 30 x---S
35	56.5	82.5	46	50	WCWK 35 x---L
38	76.0	108.5	55	60	WCWK 38 x---S
42	61.5	88.0	55	60	WCWK 42 x---L
50	88.0	117.0	70	80	WCWK 50 x---S

T = TUBE WALL THICKNESS, PLEASE SPECIFY.

DIMENSIONS SUBJECT TO CHANGE.



FOR METRIC SIZE OUT SIDE DIAMETER TUBING

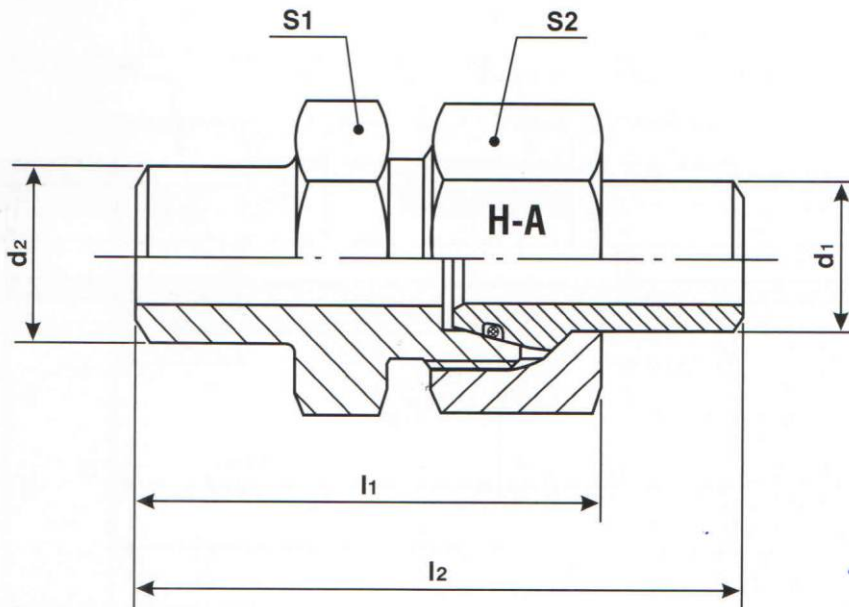
d ₁	<u>l₁</u>	<u>l₂</u>	S1	S2	PART NUMBER d ₁ x T
10	51	84	19	22	WC 10 x ---- S
12	53	86	22	24	WC 12 x ---- S
16	59	102	27	30	WC 16 x ---- S
20	69	113	32	36	WC 20 x ---- S
25	77	133	41	46	WC 25 x ---- S
30	83	142	46	50	WC 30 x ---- S
38	93	158	55	60	WC 38 x ---- S
50	117	175	70	80	WC 50 x ---- S

FOR INCH SIZE NOMINAL BORE PIPING

d ₁	<u>l₁</u>	<u>l₂</u>	S1	S2	PART NUMBER -SCH.
13.7(1/4 NB)	48.5	100.5	24	27	4 WCNB----
17.1(3/8 NB)	54.0	107.0	27	32	6 WCNB----
21.3(1/2 NB)	61.0	107.0	30	36	8 WCNB----
26.7(3/4 NB)	68.0	137.0	36	41	12 WCNB----
33.4(1 NB)	78.0	155.0	46	52	16 WCNB----
42.2(1 1/4 NB)	84.0	184.0	55	60	20 WCNB----
48.3(1 1/2 NB)	87.0	206.0	65	70	24 WCNB----

T = TUBE WALL THICKNESS, PLEASE SPECIFY.
SCH. = PIPE SCHEDULE, PLEASE SPECIFY

DIMENSIONS SUBJECT TO CHANGE.

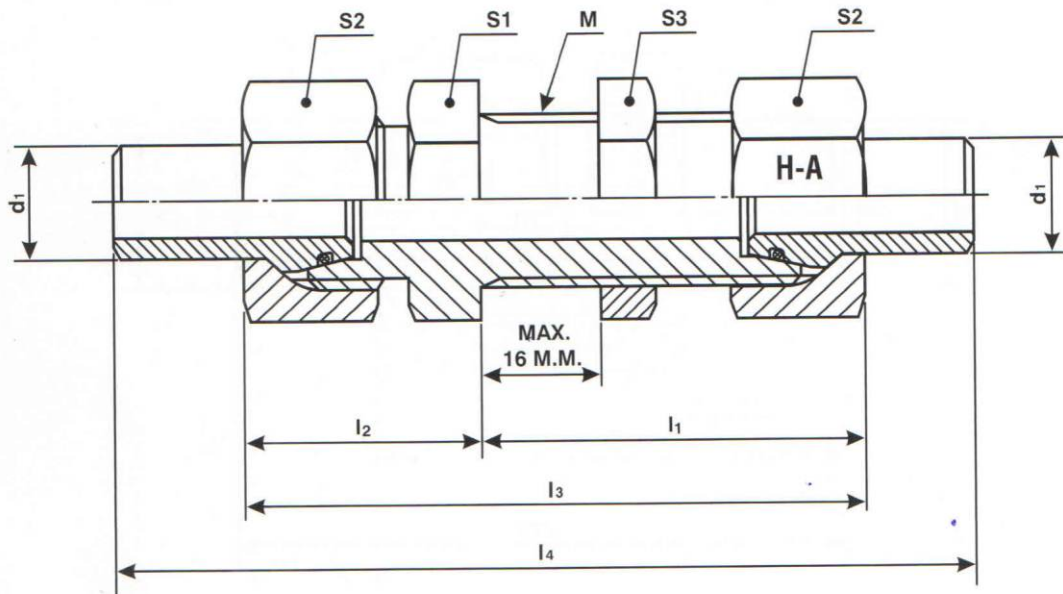


FOR METRIC SIZE OUTSIDE DIAMETER TUBING

d ₁	<u>l₁</u>	<u>l₂</u>	d ₂	S1	S2	PART NUMBER d ₁ x T
10	39.5	56.0	15	19	22	WCW 10 x---S
12	41.5	58.0	17	22	24	WCW 12 x---S
16	45.5	67.0	21	27	30	WCW 16 x---S
20	52.5	74.5	26	32	36	WCW 20 x---S
25	57.5	85.5	31	41	46	WCW 25 x---S
30	63.5	93.0	36	46	50	WCW 30 x---S
38	70.0	102.5	44	55	60	WCW 38 x---S
50	91.0	120.0	60	70	80	WCW 50 x---S

T = TUBE WALL THICKNESS, PLEASE SPECIFY.

DIMENSIONS SUBJECT TO CHANGE.

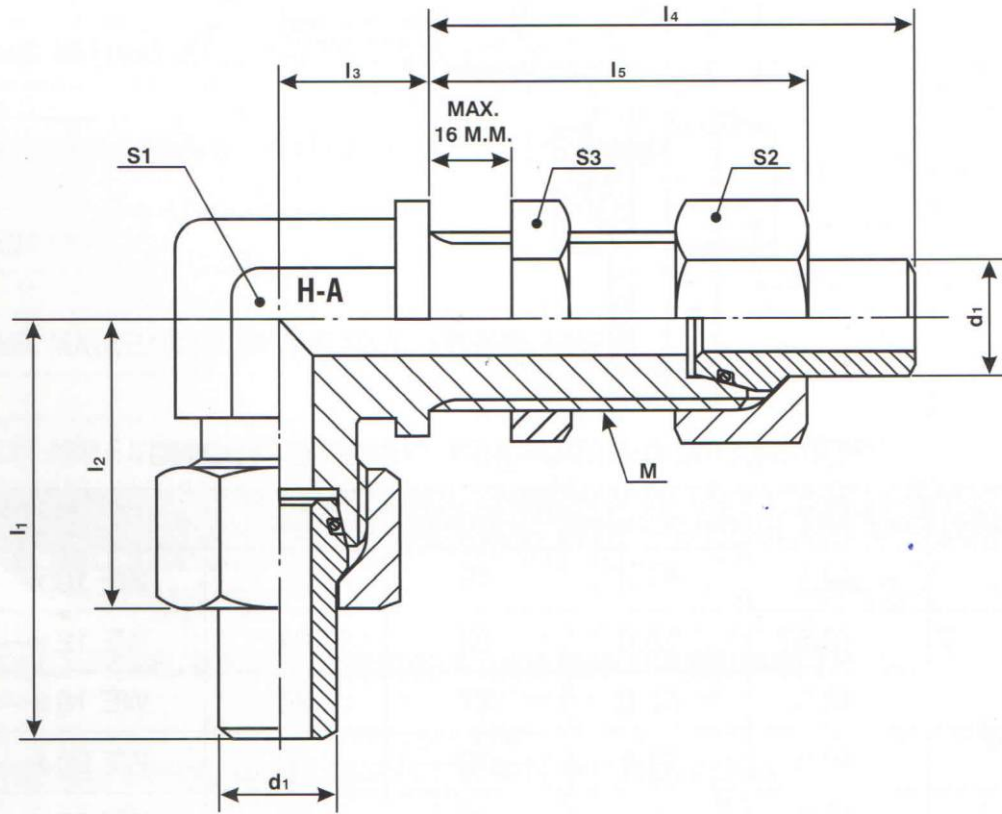


FOR METRIC SIZE OUTSIDE DIAMETER TUBING

d ₁	<u>l₁</u>	<u>l₂</u>	<u>l₃</u>	<u>l₄</u>	S1	S2	S3	METRIC THREAD M	PART NUMBER d ₁ x T
10	46.5	31.5	78.0	111.0	24	22	24	M 18 x 1.5	WCV 10 x---S
12	47.5	31.5	79.0	112.0	27	24	27	M 20 x 1.5	WCV 12 x---S
16	50.5	35.5	86.0	129.0	32	30	32	M 24 x 1.5	WCV 16 x---S
20	56.5	40.5	97.0	141.0	41	36	41	M 30 x 2.0	WCV 20 x---S
25	60.5	45.5	106.0	162.0	46	46	46	M 36 x 2.0	WCV 25 x---S
30	65.5	49.5	115.0	174.0	50	50	50	M 42 x 2.0	WCV 30 x---S
38	69.0	54.0	123.0	188.0	65	60	65	M 52 x 2.0	WCV 38 x---S
50	79.0	65.0	144.0	202.0	75	80	80	M 68 x 2.0	WCV 50 x---S

T = TUBE WALL THICKNESS, PLEASE SPECIFY.
NOMINAL BORE PIPE FITTINGS ON REQUEST

DIMENSIONS SUBJECT TO CHANGE.

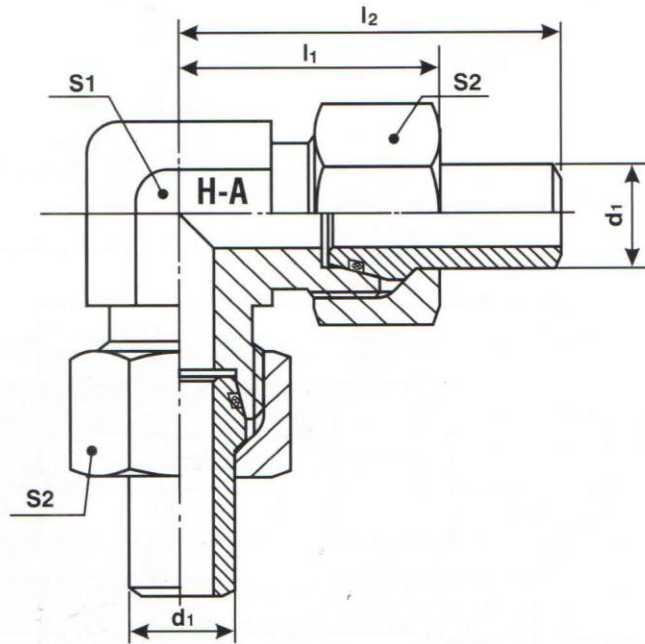


FOR METRIC SIZE OUTSIDE DIAMETER TUBING

d ₁	l ₁	l ₂	l ₃	l ₄	l ₅	S1	S2	S3	METRIC THREAD M	PART NUMBER d ₁ x T
10	51.0	34.5	20	63.0	46.5	19	22	24	M 18 x 1.5	WEV 10 x---S
12	55.0	38.5	21	64.0	47.5	17	24	27	M 20 x 1.5	WEV 12 x---S
16	65.0	43.5	24	72.0	50.5	24	30	32	M 24 x 1.5	WEV 16 x---S
20	71.5	49.5	30	78.5	56.5	27	36	41	M 30 x 2.0	WEV 20 x---S
25	83.5	55.5	34	88.5	60.5	36	46	46	M 36 x 2.0	WEV 25 x---S
30	93.0	63.5	39	95.0	65.5	41	50	50	M 42 x 2.0	WEV 30 x---S
38	105.5	73.0	43	101.5	69.0	50	60	65	M 52 x 2.0	WEV 38 x---S

T = TUBE WALL THICKNESS, PLEASE SPECIFY.
NOMINAL BORE PIPE FITTINGS ON REQUEST

DIMENSIONS SUBJECT TO CHANGE.



FOR METRIC SIZE OUT SIDE DIAMETER TUBING

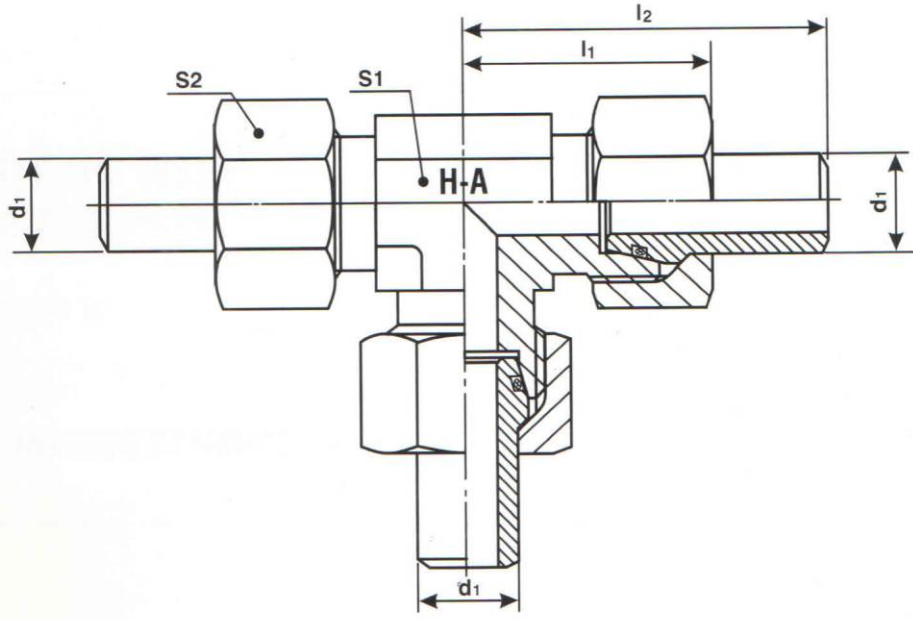
d ₁	$\underline{l_1}$	$\underline{l_2}$	S1	S2	PART NUMBER d ₁ x T
10	34.5	51.0	19	22	WE 10 x---- S
12	38.5	55.0	22	24	WE 12 x---- S
16	43.5	65.0	27	30	WE 16 x---- S
20	49.5	71.5	30	36	WE 20 x---- S
25	55.5	83.5	36	46	WE 25 x---- S
30	63.5	93.0	41	50	WE 30 x---- S
38	73	105.5	55	60	WE 38 x---- S
50	97.5	126.5	70	80	WE 50 x---- S

FOR INCH SIZE NOMINAL BORE PIPING

d ₁	$\underline{l_1}$	$\underline{l_2}$	S1	S2	PART NUMBER -SCH.
13.7(1/4 NB)	38.5	64.5	22	27	4 WENB-----
17.1(3/8 NB)	43.0	69.5	27	32	6 WENB-----
21.3(1/2 NB)	48.0	71.0	30	36	8 WENB-----
26.7(3/4 NB)	53.5	88.0	36	41	12 WENB-----
33.4(1 NB)	65.0	103.5	46	52	16 WENB-----
42.2(1 1/4 NB)	69.0	119.0	55	60	20 WENB-----
48.3(1 1/2 NB)	80.0	139.5	65	70	24 WENB-----

T = TUBE WALL THICKNESS, PLEASE SPECIFY.
SCH. = PIPE SCHEDULE, PLEASE SPECIFY

DIMENSIONS SUBJECT TO CHANGE.



FOR METRIC SIZE OUT SIDE DIAMETER TUBING

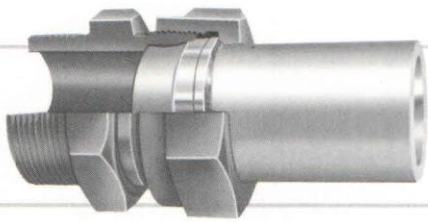
d ₁	$\underline{l_1}$	$\underline{l_2}$	S1	S2	PART NUMBER d ₁ x T
10	34.5	51.0	19	22	WT 10 x---- S
12	38.5	55.0	22	24	WT 12 x---- S
16	43.5	65.0	27	30	WT 16 x---- S
20	49.5	71.5	32	36	WT 20 x---- S
25	55.5	83.5	36	46	WT 25 x---- S
30	63.5	93.0	44	50	WT 30 x---- S
38	73.0	105.5	55	60	WT 38 x---- S
50	97.5	126.5	70	80	WT 50 x---- S

FOR INCH SIZE NOMINAL BORE PIPING

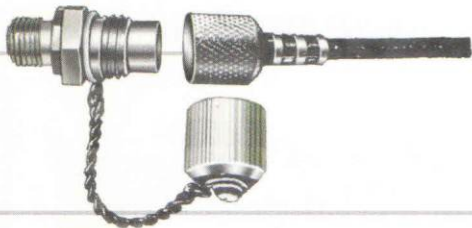
d ₁	$\underline{l_1}$	$\underline{l_2}$	S1	S2	PART NUMBER -SCH.
13.7(1/4 NB)	38.5	64.5	22	27	4 WTNB ----
17.1(3/8 NB)	43.0	69.5	27	32	6 WTNB ----
21.3(1/2 NB)	48.0	71.0	30	36	8 WTNB ----
26.7(3/4 NB)	53.5	88.0	36	41	12 WTNB ----
33.4(1 NB)	65.0	103.5	46	52	16 WTNB ----
42.2(1 1/4 NB)	69.0	119.0	55	60	20 WTNB ----
48.3(1 1/2 NB)	80.0	139.5	65	70	24 WTNB ----

T = TUBE WALL THICKNESS, PLEASE SPECIFY.
SCH. = PIPE SCHEDULE, PLEASE SPECIFY

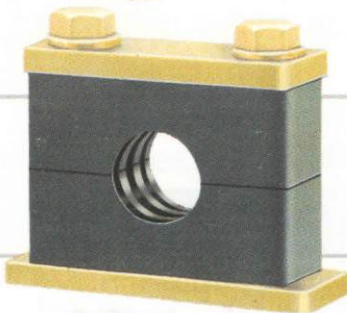
DIMENSIONS SUBJECT TO CHANGE.



FLARELESS BITE TYPE FITTINGS



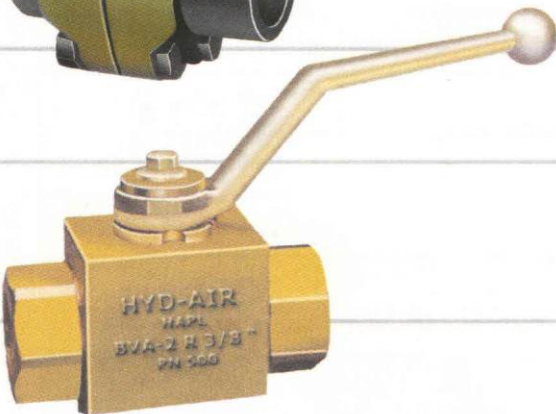
MINIMESS SYSTEM



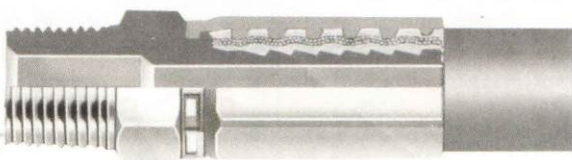
PIPE CLAMPS



FLANGES



BALL VALVES



HOSE ASSEMBLIES



QUICK DISCONNECT COUPLINGS



HYD-AIR Engineering Pvt. Ltd.

Office : 1009, 10th Floor, Panchshil Plaza, Hughes Road (N. S. Patkar Marg),
Gamdevi, Mumbai - 400 007. Tel. : 91-22-23636089 Sales : 23638260
Email : midc@hyd-air-group.com Web site : www.Hyd-air-group.com

Works : Plot No. C-3, Phase-I, MIDC, Chakan Indl. Area, Post Mahalunge,
Pune - 410501 Tel. No. : 02135-645001