



QUICK DISCONNECT COUPLINGS

FLAT FACE- POPPET TYPE - AG STYLE - THREAD-TO-CONNECT - HIGH PRESSURE - WING STYLE
TRACTORS - EXCAVATORS - BACKHOE-LOADERS - HYDRAULIC TOOLS - OFFSHORE - INDUSTRIAL PLANTS - VEHICLES - COOLING - CHEMICAL



HYD-AIR Engineering
www.hyd-air-group.com



A series ISO-7241 “A” type general purpose quick disconnect couplings Interchangeable with: Holm, Parker 6600, Aeroquip 5600, Stucchi BIR, Faster ANV	Page 3
B series – Steel , Brass, SS304, SS316 ISO-7241 “B” type industrial quick disconnect couplings Interchangeable with: Snap Tite 72, Parker 60, Aeroquip FD45, Stucchi IRB, Faster HNV	Page 4
HPA high pressure series High pressure screw Couplings, Ball Style Interchangeable with: Parker 3000, Faster PVV, Powerteam C39, Enerpac C-604	Page 5
Flush Face CPR series - BSP ISO 16028 Flush Face (Non Spill) Quick Disconnect Couplings, BSP threads Interchangeable with: Snap Tite 74, Parker FEM, Aeroquip FD89, Stucchi FIRG/A, Faster 2FFI	Page 6
Flush Face CPR series - UNF ISO 16028 Flush Face (Non Spill) Quick Disconnect Couplings, UNF thread Interchangeable with: Snap Tite 74, Parker FEM, Aeroquip FD89, Stucchi FIRG/A, Faster 2FFI	Page 7
W series – Brass Wing style screw couplings Interchangeable with: Parker 6100, Aeroquip FD51 (5100), Snap-tite 78	Page 8
AG Series – Agricultural style Interchangeable with Parker 4000 Series, Faster NS, ISO 5675 Agricultural interchange	Page 9
APL Series – Agricultural Push-Pull Sleeve Interchangeable with: Parker 4200, Faster PV, Stucchi IRS	Page 10
AFPL Series – Agricultural Rigid Mounting Push-Pull Interchangeable with: Faster 3CFPV	Page 11
HVEP Series Flat Face Screw Couplings Interchangeable with Stucchi VEP, Parker FET	Page 12

Specifications, sizes, design and pricing is subject to change without notice. .

A series

Quick Disconnect Couplings

Standard: ISO 7241-1 Series 'A'

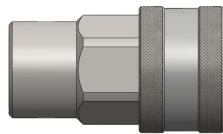
Interchangeable with:

Parker 6600, Aeroquip 5600, Stucchi BIR, Faster ANV

Material: Steel

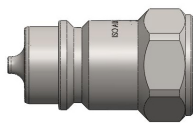
Seals: NBR

NPT, SAE/UNF, Metric threads available on request



Coupler

Body Size	Port Size	Port Thread	Max. Op. Pressure Coupled	Part Number
1/4	1/4	BSP	350 bar	A-C-4G
3/8	3/8	BSP	300 bar	A-C-6G
1/2	1/2	BSP	250 bar	A-C-8G
3/4	3/4	BSP	250 bar	A-C-12G
1	1	BSP	230 bar	A-C-16G
1-1/4	1 1/4	BSP	230 Bar	A-C-20G
1-1/2	1 1/2	BSP	190 Bar	A-C-24G
2	2	BSP	190 Bar	A-C-32G



Plug

Body Size	Port Size	Port Thread	Max. Op. Pressure Coupled	Part Number
1/4	1/4	BSP	350 bar	A-N-4G
3/8	3/8	BSP	300 bar	A-N-6G
1/2	1/2	BSP	250 bar	A-N-8G
3/4	3/4	BSP	250 bar	A-N-12G
1	1	BSP	230 bar	A-N-16G
1-1/4	1 1/4	BSP	230 Bar	A-N-20G
1-1/2	1 1/2	BSP	190 Bar	A-N-24G
2	2	BSP	190 Bar	A-N-32G

B series

Industrial Quick Disconnect Couplings

Standard: ISO 7241-1 Series 'B'

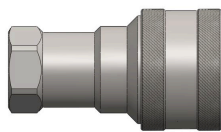
Interchangeable with:

Snap Tite 72, Parker 60, Aeroquip FD45, Stucchi IRB, Faster HNV

Material: Steel (also available in Brass and Stainless Steel 304 and 316).

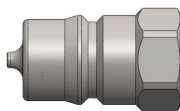
Seals: NBR (SS 316 couplings come with Viton seals standard)

NPT, SAE/UNF and Metric threads available on request



Coupler

Body Size	Port Size	Port Thread	Max. Op. Pressure Coupled (STEEL)	Part Number
1/8	1/8	BSP	300 bar	B-C-2G
1/4	1/4	BSP	300 bar	B-C-4G
3/8	3/8	BSP	250 bar	B-C-6G
1/2	1/2	BSP	250 bar	B-C-8G
3/4	3/4	BSP	230 bar	B-C-12G
1	1	BSP	230 bar	B-C-16G
1-1/2	1 1/4	BSP	100 bar	B-C-20G
1-1/2	1 1/2	BSP	100 bar	B-C-24G
2-1/2	2	BSP	100 bar	B-C-32G
2-1/2	2-1/2	BSP	100 bar	B-C-40G
2-1/2	3	BSP	100 bar	B-C-48G



Nipple

Body Size	Port Size	Port Thread	Max. Op. Pressure Coupled (STEEL)	Part Number
1/8	1/8	BSP	300 bar	B-N-2G
1/4	1/4	BSP	300 bar	B-N-4G
3/8	3/8	BSP	250 bar	B-N-6G
1/2	1/2	BSP	250 bar	B-N-8G
3/4	3/4	BSP	230 bar	B-N-12G
1	1	BSP	230 bar	B-N-16G
1-1/2	1 1/4	BSP	100 bar	B-N-20G
1-1/2	1 1/2	BSP	100 bar	B-N-24G
2-1/2	2	BSP	100 bar	B-N-32G
2-1/2	2-1/2	BSP	100 bar	B-N-40G
2-1/2	3	BSP	100 bar	B-N-48G

NOTES:

For BRASS suffix "-B" at the end of the part number. Example: B-C-4G-B

For SS304 suffix "-304" at the end of the part number. Example: B-C-4G-304

For SS316 suffix "-316" at the end of the part number. Example: B-C-4G-316

HPA high pressure series

Screw Couplings, Ball Style

Standard: Enerpac interchange

Interchangeable with:

Snap-tite 76, Parker 3000, Faster PVV, Powerteam C39, Enerpac C-604

Material: Steel

Seals: NBR



COUPLERS

Description	Body Size	Port Size	Port Thread	Max. Op. Pressure Coupled	Part Number
Coupler	1/4	1/4	NPT	720 bar	HPA-C-4N
Coupler	3/8	3/8	NPT	720 bar	HPA-C-6N

NIPPLES

Description	Body Size	Port Size	Port Thread	Max. Op. Pressure Coupled	Part Number
Nipple	1/4	1/4	NPT	720 bar	HPA-N-4N
Nipple	3/8	3/8	NPT	720 bar	HPA-N-6N

DUST CAP FOR COUPLER

Body Size	Plastic Part Number	Metal Part Number
1/4	HPA-PDC-1/4F	HPA-MDC-1/4F
3/8	HPA-PDC-3/8F	HPA-MDC-3/8F

DUST CAP FOR NIPPLE

Body Size	Plastic Part Number	Metal Part Number
1/4	HPA-PDC-1/4M	HPA-MDC-1/4M
3/8	HPA-PDC-3/8M	HPA-MDC-3/8M

CPR series - BSP

Flush Face (Non Spill) Quick Disconnect Couplings, BSP threads

Standard: ISO 16028

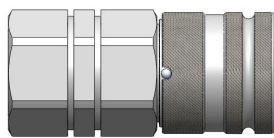
Interchangeable with:

Parker FEM, Aeroquip FD89, Stucchi FIRG/A, Faster 2FFI

Material: Steel

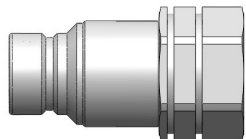
Seals: NBR

* NPT threads available on request.



Coupler

Body Size			Port		Max. Op. Pr Coupled	Part Number
Inch	ISO	Ø	Size	Thread		
1/4	6.3	1.15	1/4	BSP	350 bar	CPR-C-4-4G
3/8	10	1.26	3/8	BSP	300 bar	CPR-C-6-6G
3/8	10	1.26	1/2	BSP	300 bar	CPR-C-6-8G
1/2	12.5	1.50	1/2	BSP	250 bar	CPR-C-8-8G
1/2	12.5	1.50	3/4	BSP	250 bar	CPR-C-8-12G
5/8	16	1.65	3/4	BSP	250 bar	CPR-C-10-12G
3/4	19	1.89	3/4	BSP	250 bar	CPR-C-12-12G
3/4	19	1.89	1	BSP	250 bar	CPR-C-12-16G
1	25	2.17	1	BSP	250 bar	CPR-C-16-16G
1	25	2.17	1-1/4	BSP	250 bar	CPR-C-16-20G
1-1/4	31.5	2.56	1-1/2	BSP	250 bar	CPR-C-20-24G



Plug

Body Size			Connection		Max. Op. Pr Coupled	Part Number
Inch	ISO	Ø	Size	Thread		
1/4	6.3	.63	1/4	BSP	350 bar	CPR-N-4-4G
3/8	10	.78	3/8	BSP	300 bar	CPR-N-6-6G
3/8	10	.78	1/2	BSP	300 bar	CPR-N-6-8G
1/2	12.5	.96	1/2	BSP	250 bar	CPR-N-8-8G
1/2	12.5	.96	3/4	BSP	250 bar	CPR-N-8-12G
5/8	16	1.06	3/4	BSP	250 bar	CPR-N-10-12G
3/4	19	1.18	3/4	BSP	250 bar	CPR-N-12-12G
3/4	19	1.18	1	BSP	250 bar	CPR-N-12-16G
1	25	1.42	1	BSP	250 bar	CPR-N-16-16G
1	25	1.42	1-1/4	BSP	250 bar	CPR-N-16-20G
1-1/4	31.5	1.74	1-1/2	BSP	250 bar	CPR-N-20-24G

CPR series - UNF

Flush Face (Non Spill) Quick Disconnect Couplings, UNF threads

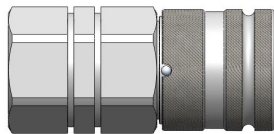
Standard: ISO 16028

Interchangeable with:

Snap Tite 74, Parker FEM, Aeroquip FD89, Stucchi FIRG/A, Faster 2FFI

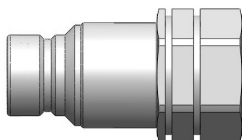
Material: Steel

Seals: NBR



Coupler

Inch	Body Size		Connection		Max. Op. Pr Coupled	Part Number
	ISO	Ø	Size	Thread		
1/4	6.3	1.15	9/16-18	UNF	350 bar	CPR-C-4-60
3/8	10	1.26	3/4-16	UNF	300 bar	CPR-C-6-80
3/8	10	1.26	7/8-14	UNF	300 bar	CPR-C-6-100
1/2	12.5	1.50	7/8-14	UNF	250 bar	CPR-C-8-100
1/2	12.5	1.50	1-1/16-12	UNF	250 bar	CPR-C-8-120
5/8	16	1.65	1-1/16-12	UNF	250 bar	CPR-C-10-120
3/4	19	1.89	1-5/16-12	UNF	250 bar	CPR-C-12-160
1	25	2.17	1-5/8-12	UNF	250 bar	CPR-C-16-200
1-1/4	31.5	2.56	1-7/8-12	UNF	250 bar	CPR-C-20-240
1-1/2	40	3.15	2-1/2-12	UNF	180 bar	CPR-C-24-320



Nipple

Inch	Body Size		Connection		Max. Op. Pr Coupled	Part Number
	ISO	Ø	Size	Thread		
1/4	6.3	1.15	9/16-18	UNF	350 bar	CPR-N-4-60
3/8	10	1.26	3/4-16	UNF	300 bar	CPR-N-6-80
3/8	10	1.26	7/8-14	UNF	300 bar	CPR-N-6-100
1/2	12.5	1.50	7/8-14	UNF	250 bar	CPR-N-8-100
1/2	12.5	1.50	1-1/16-12	UNF	250 bar	CPR-N-8-120
5/8	16	1.65	1-1/16-12	UNF	250 bar	CPR-N-10-120
3/4	19	1.89	1-5/16-12	UNF	250 bar	CPR-N-12-160
1	25	2.17	1-5/8-12	UNF	250 bar	CPR-N-16-200
1-1/4	31.5	2.56	1-7/8-12	UNF	250 bar	CPR-N-20-240
1-1/2	40	3.15	2-1/2-12	UNF	180 bar	CPR-N-24-320

W series

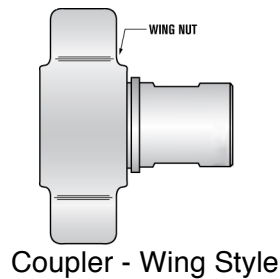
Wing style screw couplings

Interchangeable with:

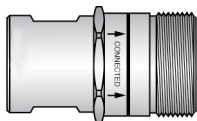
Parker 6100, Aeroquip FD51 (5100), Snap-tite 78

Material: Brass

Seals: NBR



Body Size Inch	Connection Size	Thread	Max. Op. Pr Coupled	Part Number
3/4	3/4	BSP	210 bar	W-C-12-12G
1	1	BSP	210 bar	W-C-16-16G
1-1/4	1-1/4	BSP	210 bar	W-C-20-20G



Body Size Inch	Connection Size	Thread	Max. Op. Pr Coupled	Part Number
3/4	3/4	BSP	210 bar	W-N-12-12G
1	1	BSP	210 bar	W-N-16-16G
1-1/4	1-1/4	BSP	210 bar	W-N-20-20G

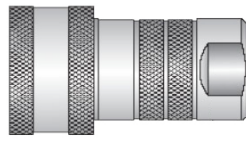
AG series

Agricultural Style Quick Disconnect Couplings

Standard: ISO 5675 Agricultural interchange

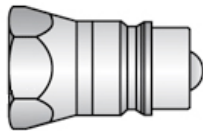
Interchangeable with:
Parker 4000 Series, Faster NS

Material: Steel
Seals: NBR



Coupler

Body Size	Connection Size	Thread	Max. Op. Pressure Coupled	Part Number
3/8	3/8	BSP	300 bar	AG-C-6-6G
3/8	9/16-18	UNF	300 bar	AG-C-6-OB6
1/2	1/2	BSP	300 bar	AG-C-8-8G
1/2	3/4-16	UNF	300 bar	AG-C-8-OB8
1/2	7/8-14	UNF	300 bar	AG-C-8-OB10



Nipple

Body Size	Connection Size	Thread	Max. Op. Pressure Coupled	Part Number
3/8	3/8	BSP	300 bar	AG-N-6-6G
3/8	9/16-18	UNF	300 bar	AG-N-6-OB6
1/2	1/2	BSP	300 bar	AG-N-8-8G
1/2	3/4-16	UNF	300 bar	AG-N-8-OB8
1/2	7/8-14	UNF	300 bar	AG-N-8-OB10

NOTE:

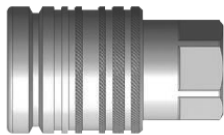
Standard version comes with a ball valve. For poppet valve, please suffix "-P" to the end of the part number. Example: AG-C-6-6G-P

APL series – Agricultural Push-Pull Sleeve Quick Disconnect Couplings

Standard: ISO 7241-1 Series 'A' (DN13 – 1/2")

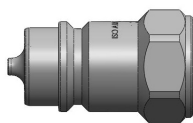
Interchangeable with:
Parker 4200, Stucchi IRS, Faster PV

Material: Steel
Seals: NBR



Coupler

Body Size	Port Size	Port Thread	Max. Op. Pressure Coupled	Part Number
1/2	1/2	BSP	250 bar	APL-C-8G
1/2	1/4	NPT	250 bar	APL-C-8N
1/2	M22x1.5	Metric	250 bar	APL-C-M22
1/2	3/4-16	UNF	250 bar	APL-C-8O



Nipple

Body Size	Port Size	Port Thread	Max. Op. Pressure Coupled	Part Number
1/2	1/2	BSP	250 bar	A-N-8G
1/2	1/4	NPT	250 bar	A-N-8N
1/2	M22x1.5	Metric	250 bar	A-N-M22
1/2	3/4-16	UNF	250 bar	A-N-8O

AFPL series – Agricultural Rigid Mounting Push-Pull Quick Disconnect Couplings

Standard: 7241-1 Series 'A' (DN13 – 1/2")

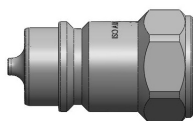
Interchangeable with:
Parker Rigid Mount Style , Faster 3CFPV

Material: Steel
Seals: NBR



Coupler

Body Size	Port Size	Port Thread	Max. Op. Pressure Coupled	Part Number
1/2	1/2	BSP	250 bar	AFPL-C-8G
1/2	1/4	NPT	250 bar	AFPL-C-8N
1/2	M22x1.5	Metric	250 bar	AFPL-C-M22
1/2	3/4-16	UNF	250 bar	AFPL-C-8O



Nipple

Body Size	Port Size	Port Thread	Max. Op. Pressure Coupled	Part Number
1/2	1/2	BSP	250 bar	A-N-8G
1/2	1/4	NPT	250 bar	A-N-8N
1/2	M22x1.5	Metric	250 bar	A-N-M22
1/2	3/4-16	UNF	250 bar	A-N-8O

Series AFPL couplers and nipples are available with a wide range of internal or external threads as options. Please contact HYD-AIR for your specific application.

HVEP Series

Flush Face Screw Couplings

Interchangeable with: Stucchi VEP, Parker FET

Material: Steel



Part	Body Size	Thread NPT	Max WP	Part #
Coupler	3/4"	3/4"	500 bar	HVEP-C-12-12G
Nippe	3/4"	3/4"	500 bar	HVEP-N-12-12G
Coupler	1"	1"	470 bar	HVEP-C-16-16G
Nippe	1"	1"	470 bar	HVEP-N-16-16G
Coupler	1-1/4"	1-1/4"	400 bar	HVEP-C-20-20G
Nippe	1-1/4"	1-1/4"	400 bar	HVEP-N-20-20G